



## Berryjerry Station Wagga Wagga NSW

7 3 4

Profitable Murrumbidgee River Holding

Total Area - 2,169 ha (5,361 acres)

Irrigation - 323 acres - centre pivots

Well serviced by Wagga Wagga (33km). Equidistant between Sydney (490km) and Melbourne (450km).

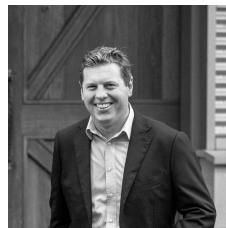
Mixed enterprise - Suitable for grazing and farming (dryland and irrigated) - wheat, barley, canola, corn, millet and lucerne.

Beef Production - Capacity to run 1,000 breeding cows and followers or approximately 18,000-20,000 DSE.

Ideal prime lamb fattening depot - B-double access

**Land Size** : 2170 ha

**View** : <https://www.inglisproperty.com.au/sale/nsw/riverina/wagga-wagga/residential/rural/5828753>



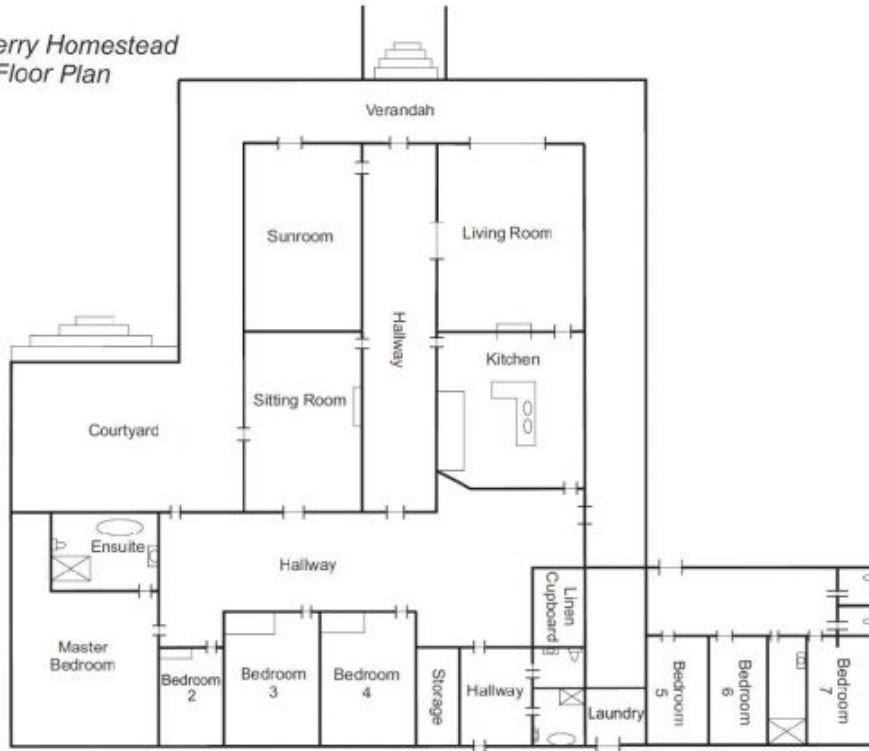
**Sam Triggs**  
(02) 9399 7999



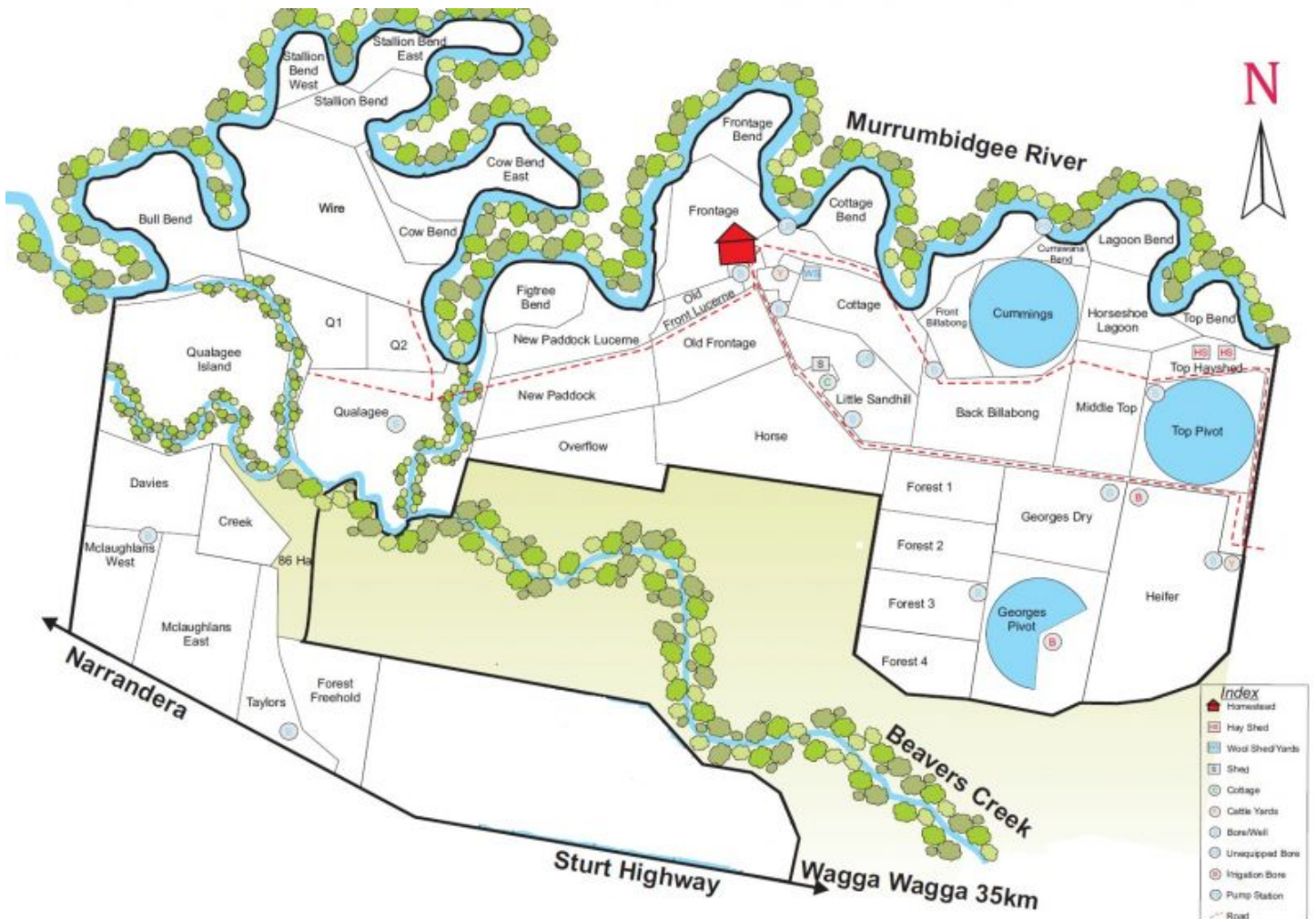
**Jamie Inglis**  
(02) 9399 7999



# **N** Berryjerry Homestead Floor Plan



Note: not to scale



**Index**

- Homestead
- Hay Shed
- Wool Shed/Yards
- Shed
- Cottage
- Cattle Yards
- Bore/Well
- Unequipped Bore
- Irrigation Bore
- Pump Station
- Road