



2648 Old Narrandera Road Currawarna NSW

Inglis Rural Property in conjunction with McGrath Riverina are pleased to present Elsley Park, a versatile 640* acre mixed-farming property in the sort-after Riverina region 32*km from Wagga Wagga.

SALE AND LEASEBACK AVAILABLE

A Sale and Leaseback opportunity exists for passive investors by negotiation with the vendor.

AREA

259* hectares (640* acres)

SHIRE & RATES

Wagga Wagga City Council - \$2,812.00 p/a.

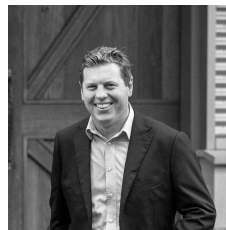
LOCATION

Situated only 32*km from Wagga Wagga, 134*km from

Price : Private Sale

Land Size : 259 ha

View : <https://www.inglisproperty.com.au/sale/nsw/riverina/currawarna/residential/rural/7346441>

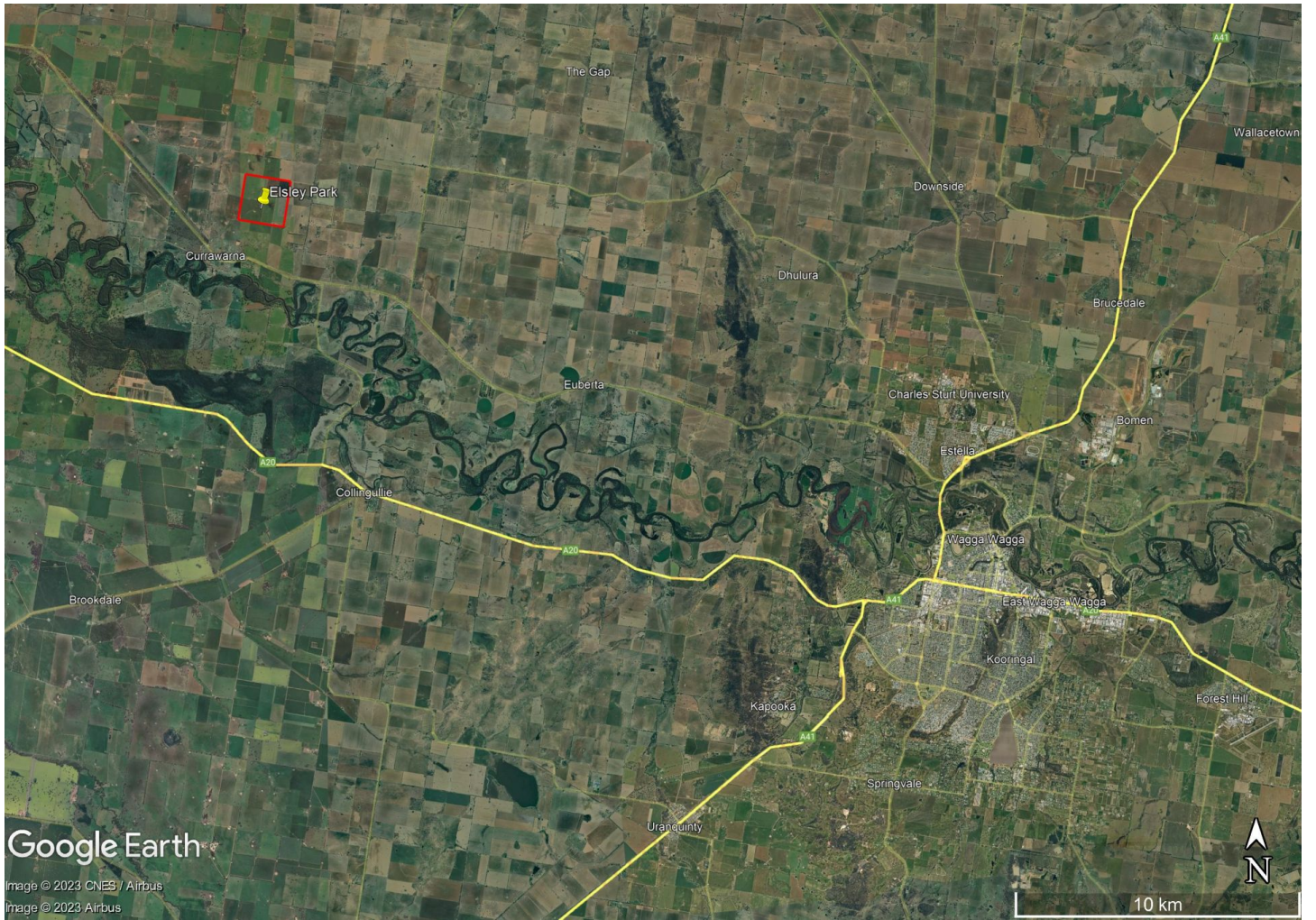


Sam Triggs
(02) 9399 7999



Liam Griffiths
(02) 9399 7999





Google Earth

Image © 2023 CNES / Airbus
Image © 2023 Airbus

10 km