



**2976 Goulburn Road Crookwell NSW**

**SOLD**

Inglis Rural Property is pleased to exclusively present Gundowringa, one of the historic holdings in the reliable Crookwell District with a diversified income stream underpinning profitability.

**AREA**

865.2\* hectares (2,137\* acres)

**LOCATION**

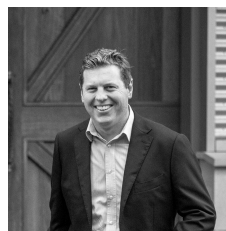
Situated 17\*km from Crookwell, 32\*km from Goulburn, 101\*km from Yass, 121\*km from Canberra and 227\*km from Sydney.

**HOMESTEAD (c.1905)**

A commanding and character-filled stone homestead

**Land Size** : 865 ha

**View** : <https://www.inglisproperty.com.au/sale/nsw/capital-monaro-snowy/crookwell/residential/rural/7776213>

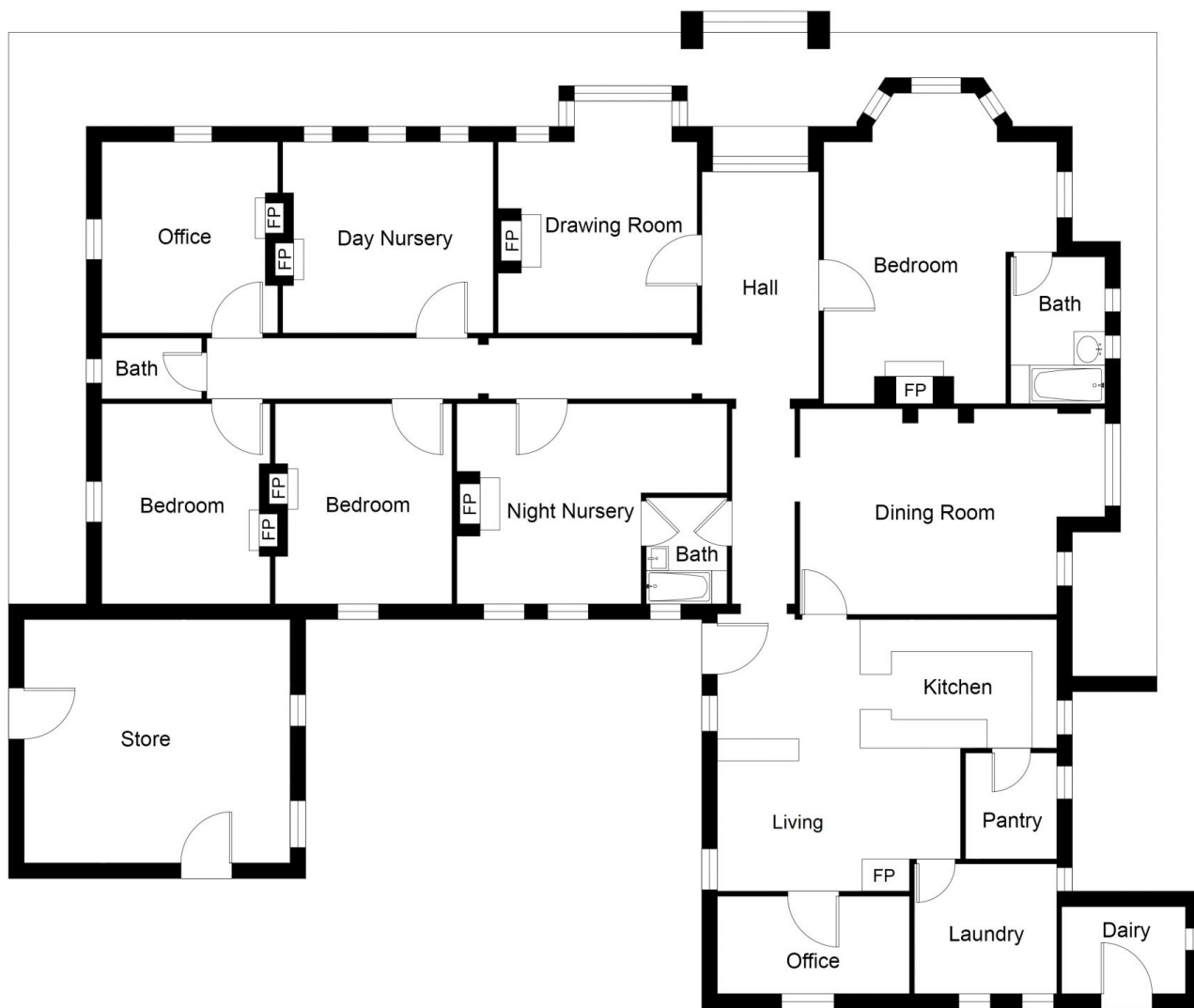


**Sam Triggs**  
**(02) 9399 7999**



**Liam Griffiths**  
**(02) 9399 7999**





## FLOOR PLAN

This floor plan including furniture, fixture measurements and dimensions are approximate and for illustrative purposes only. BoxBrownie.com gives no guarantee, warranty or representation as to the accuracy and layout. All enquiries must be directed to the agent, vendor or party representing this floor plan.

### Gundowringa Homestead